

## Message From The President

Dear Members and Friends:

April is now here and the museum will open on Sunday, April 19<sup>th</sup>. Curator Linda, Beverly and Marilyn have set up a display of elections past and present. It's election month for the Historical Society and the Nominating Committee for the society presented their nominations for the year 2008-2009. They are as follows:

Vice President.....Bill Hein  
Secretary... Charles Vallas  
Treasurer... Marilyn Chromy  
Director.....Patti Hancock  
Curator.....Patti Steilen  
Asst. Curator..Donna Vallas.

Please come to the meeting and place your vote. We need your support. The Board Meeting will be held on Thursday, April 16<sup>th</sup> and the regular meeting will be held Wednesday, April 22<sup>nd</sup>.

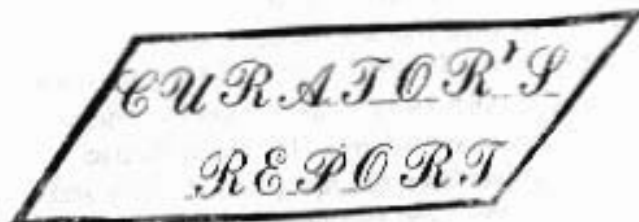
May is our annual Installation Dinner and on May 27<sup>th</sup> it will be held at Chevy Chase Country Club. Our entertainment for the evening will be Sam Magdal singing Frank Sinatra tunes. Hope to see you there.

At the regular meeting in June, following the meeting, Sonni Helmer will give a presentation on the history of buttons. She will also bring jewelry that she makes from buttons which can be purchased if so desired.

Tom Webber who has served the Wheeling Park District as Commissioner for the last twenty years and sixteen years of that as President, we are sorry to say will be leaving the district the end of April. He will be honored at our Installation Dinner along with Linda Reading who is stepping down as Curator, a position she has served for the past twelve years. We want to thank them both for their time and contribution to the park and to the Wheeling Historical Society.

Hope to see you at the next meeting.

Historically yours,  
Joan Wiener, President



Museum Update: Beverly is working on compiling a Wheeling Village Clerk list. She is almost done and is waiting on more information from Elaine. She is also working on compiling a Wheeling Historical Society Curator list.

Marilyn is working on updating the Welfin family history as I have found that some of the family is buried at the Ridgewood Cemetery.

The new exhibit on Wheeling Politics is now finished and ready for the opening of the museum.

I opened the museum last Sunday April 5<sup>th</sup> but we had no visitors, probably because the weather was too cold.

Everyone!! Remember to bring your calendars to the April meeting as we will be asking for volunteers to sign-up for May, June and etc.

We received more information on the pickle factory. It was the Merkle Pickle Factory, anyone remember it?

This is my last Curator's Report as I will be retired as of the end of April. It has been a delightful 12 years serving as your museum curator and I wish the best to each of the two new curators.

Linda Reading, Museum Curator



The first church was erected in 1868, by the Lutherans at a cost of about \$1,500. It was one-story frame, with a short steeple.

In 1836, Milwaukee Avenue is designated Post Road between Chicago and Green Bay.

Hartmann House moved from the old frame Chicago House to a cement block building at 365 S. Milwaukee Ave. In 1917, Henry Hartmann's son, Harold, ran it until 1955. Taken over by Adam Schieck, it became "Adam's Hartmann House." Since then, it has been the Spaghetti Factory and most recently the Crab House.

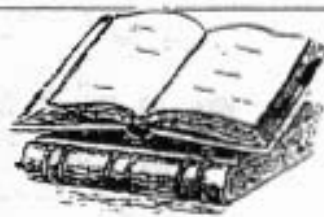
## Snapdragon part of life...

Thought I'd let you know that I am Now in the Snapdragon part of my Life...



Part of me has lost its snap and the other part is draggin'.

## A Bit of History



### The Town Still Feels the Boon

By Alan Akerson

Taken from the Wheeling Herald

Thursday, August 14, 1969

#### Wheeling

To many people the name means little more than a good meal at one of the Milwaukee Avenue restaurants. Or an afternoon of browsing through antique shops again, on Milwaukee Avenue.

Ask some people how big Wheeling is, and they'll probably answer, "A few miles long and one street wide."

At one time those people would have been right. Milwaukee Avenue, once the stagecoach route between Chicago and Milwaukee, formed the spine of Wheeling.

German restaurants sprouted along the road as did several hotels. The original village hall, a diminutive white frame building, was built on Milwaukee Avenue.

But, if Milwaukee Avenue provide the spur to Wheeling's ambling growth 50 years ago, then Dundee Road is doing the same for Wheeling's growth today, for Wheeling has done its expansion west from Milwaukee Avenue along both sides of Dundee Road.

One has only to note the locations of the present and future village halls for evidence of this westward movement. At the moment village offices are at Dundee and Milwaukee Avenue.

Later this year, however, those offices will move to a new and larger village hall, also on Dundee Road, but much further west than the present one.

Continued.....

## Great Truths That Adults Have Learned:

Raising teenagers is like nailing Jello to a tree.

Wrinkles don't hurt

Families are like fudge... mostly sweet, with a few nuts.

Today's mighty oak is just yesterday's nut that held its ground.

Laughing is good exercise. It's like jogging on the inside.

Middle age is when you choose your cereal for the fiber, not the toy.

#####

## PEOPLE OVER 35 SHOULD BE DEAD

People over 35 should be dead.

Here's why:

According to today's regulators and bureaucrats, those of us who were kids in the 40's, 50's 60's or even maybe the early 70's probably shouldn't have survived.

Our baby cribs were covered with bright colored lead-based paint.

We had no childproof lids on medicine bottles, doors or cabinets... and when we rode our bikes, we had no helmets. (Not to mention the risks we took hitchhiking.)

As children, we would ride in cars with no seatbelts or air bags

Riding in the back of a pickup truck on a warm day was always a special treat.

We drank water from the garden hose and not from a bottle

HORRORS!!

## Life in the 1500's

The next time you are washing your hands and complain because the water temperature isn't just how you like it, think about how things use to be:

Most people got married in June because they took their yearly bath in May, and still smelled pretty good by June. However, they were starting to smell pretty good by June. However they were starting to smell, so brides carried a bouquet of flowers to hide the body odor. Hence the custom today of carrying a bouquet when getting married.

Baths consisted of a big tub filled with hot water. The man of the house had the privilege of the nice clean water, then all the other sons and men. Then the women and finally the children. Last of all the babies. By then the water was so dirty you could actually lose someone in it. Hence the saying, Don't throw the baby out with the bath water.

THE BEST PIECE of English literature I've seen in quite a while .....try to Memorize this poem by December.

### "WINTER"

a poem by Abigail  
Elizabeth McIntyre



"@#\$\$% IT'S COLD!"

Poet's  
Corner

## HOPE

This would I hold more precious than fine gold,  
This would I keep although all else be lost:  
Hope in the heart, that precious priceless thing,  
Hope at any cost.

And God, if its fine luster should be dimmed,  
If seemingly through grief it may be spent,  
Help me to wait without too much despair-  
Too great astonishment.

Let me be patient when my spirit lacks  
Its high exuberance, its shining wealth,  
Hope is a matter often, God, I know,  
Of strength...of health.

Help me to wait until the strength returns,  
Help me to climb each difficult high slope;  
Always within my heart some golden gleam-  
Some quenchless spark of hope.

\*\*\*\*\*

## GREAT TRUTHS THAT LITTLE CHILDREN HAVE LEARNED!

No matter how hard you try, you can baptize cats.

When your mom is mad at your dad, don't let Her brush your hair.

If your sister hits you, don't hit her back. They Always catch the second person.

Never ask your 3-year old brother to hold a Tomato.

You can't trust dogs to watch your food.,

**Burma Shave**

NO MATTER THE PRICE  
NO MATTER HOW NEW  
THE BEST SAFETY DEVICE  
IN THE CAR IS YOU



We would like to thank the following for their donations to the Wheeling Historical Society.

Family of Gertrude Trunda. 1 Wheeling Centennial Key Holder, 1 ID Pin -Gert  
1 copy of Village Ordinance #1308

Linda Reading- 1 copy plat of Survey of The Masonic Hall Building.

Estate of Doc Taylor- 1 book titled Pullman Portrait of a Landmark Community  
1 book "New Pictorial Atlas of the World"

Marilyn Chromy - 1 Brochure .History of St Joseph the Worker Church 1957-2007

Wheeling Museum- 28 various pictures

Linda Reading- Declaration of Wickes Bankruptcy  
37 Issues of Historic Illinois

1 Book "A Museum of Early American Tools"

## IDIOT SIGHTING:

When my husband and I arrived at an automobile Dealership to pick up our car, we were told the Keys had been locked in it. We went to the Service department and found a mechanic working feverishly to unlock the driver's side door. As I watched from the passenger side, I instinctively tried the door handle and discovered that it was unlocked. "Hey." I announced to the technician, "Its open!" His reply, "I know. I already got that side."

This was at the Ford dealership Mississippi



"The object of this Society shall be the Discovery, preservation And dissemination of Knowledge about the Community of Wheeling"

## *Annual Installation Dinner*

Join with us for our Annual Installation Dinner on Wednesday, May 27, 2009 at the beautiful Chevy Chase Country Club, 1000 North Milwaukee Ave., Devonshire Room, Wheeling, Illinois.

For reservations, please call: Bill Simpson at home At 1-847-541-8692. NOTE: Once reservations are made, they must be paid for. \$30.00/person. Cash Bar.

Cocktails 6:00 p.m. Dinner 7:00 p.m.

Followed by the Installation of  
Officers

### *Menu*

Fresh Fruit Cup  
Tossed Salad with Dressing  
Fresh sliced bread & Butter  
Chicken Piccata  
Baked Potato with Sour Cream & Chives  
Chef's Seasonal Vegetables  
Peach Melba  
Coffee, Tea, Iced Tea, or Milk

RSVP by May 23, 2009. Hope to see you.

Entertainment: Sam Magdal  
Frank Sinatra Singer